

---

## BrainSAVER

RADIATION  
PROTECTION CAP



---

**95%**

protection against  
scattered radiation

---

**93%**

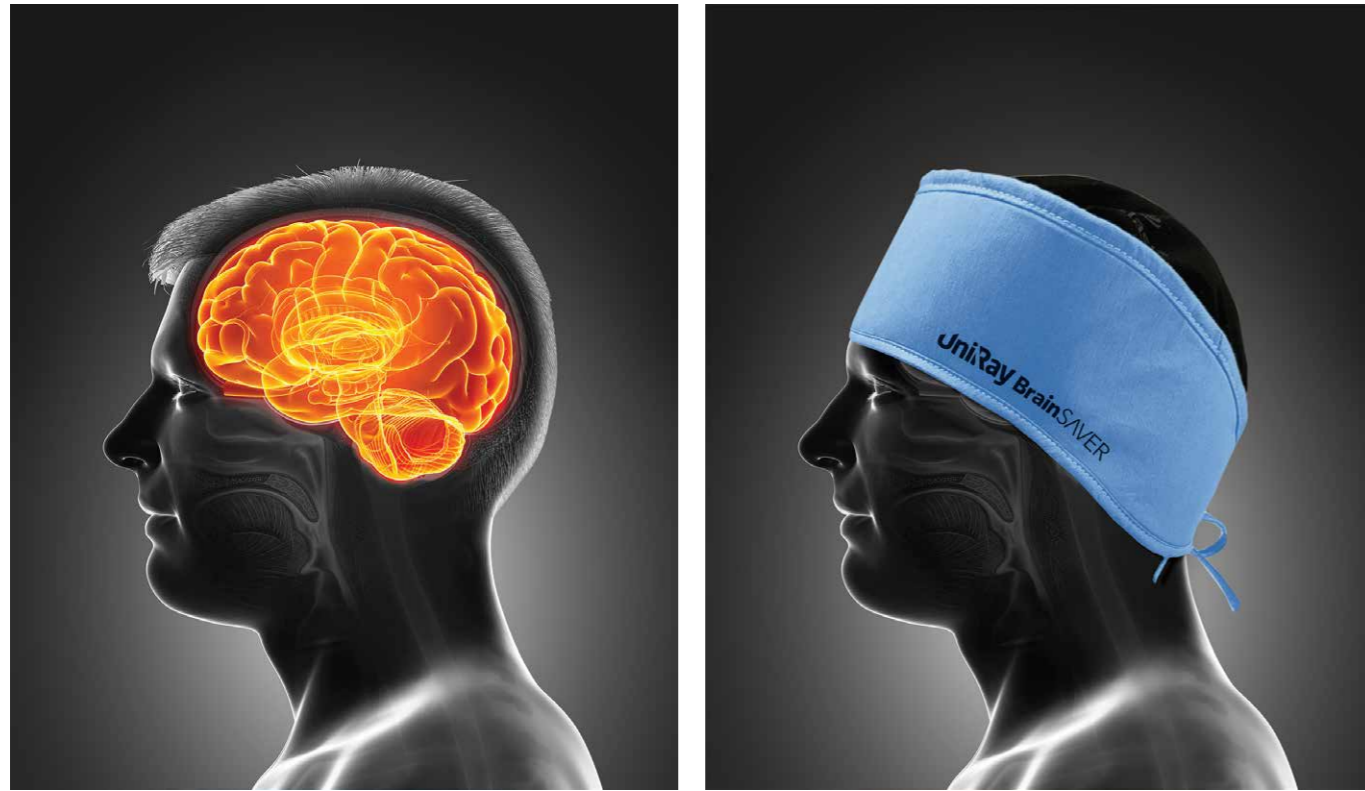
cover of brain area  
from radiation



built-in cooling  
mechanism

---

## With and without BrainSAVER



### BrainSAVER features

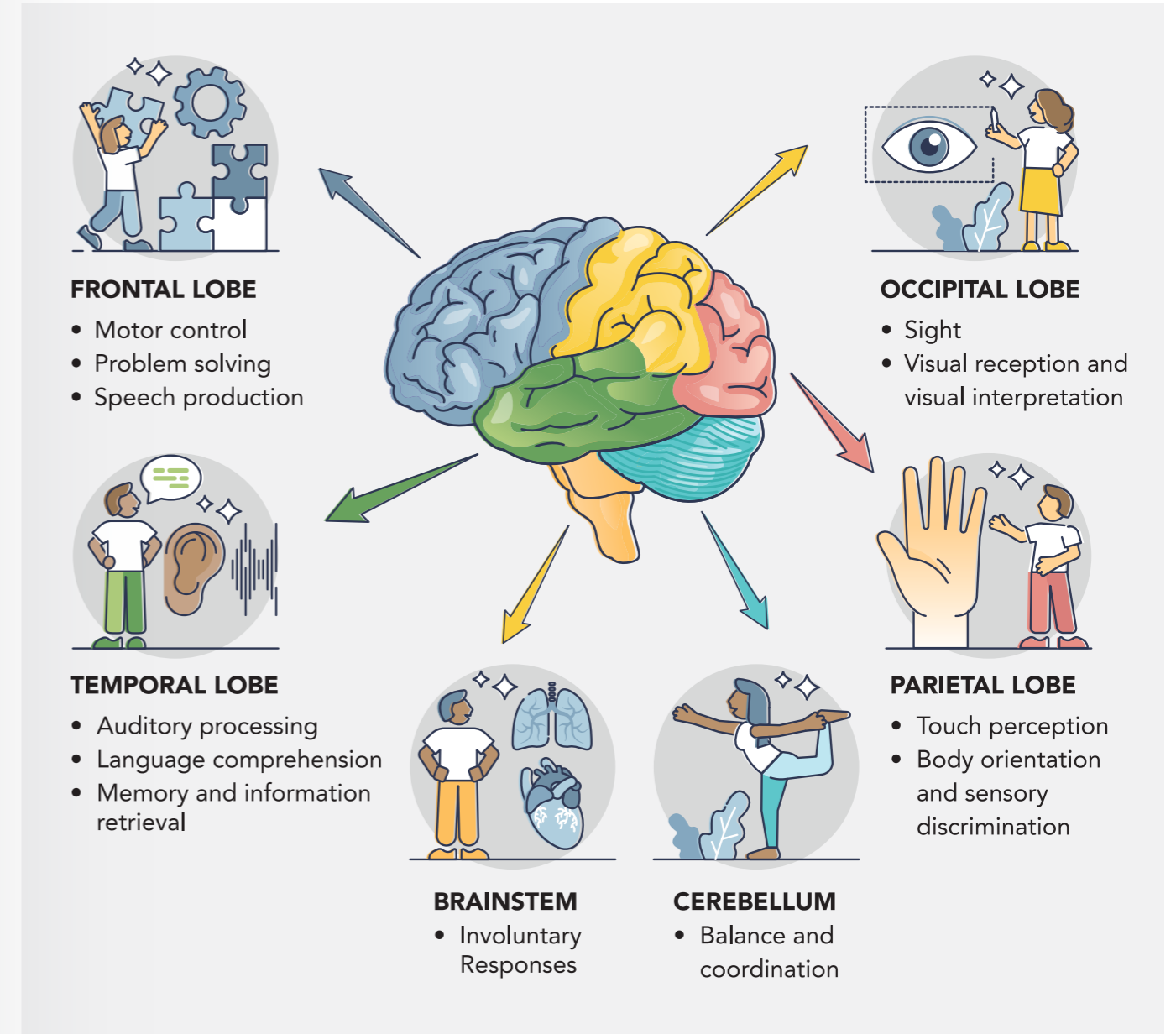
- Environmentally friendly, lead-free, and easy disposal.
- **BrainSAVER** is reusable, although it is recommended that you typically replace it at least once a week.
- **BrainSAVER** can be used for more than a day, covering several procedures.
- Compared to all other products on the market, the attenuation efficiency is much higher, ranging from 75% to over 95%.
- Minimizes radiation exposure to the left side of the brain by up to 90%.
- Minimizes radiation exposure to the left temporal lobe by up to 80%.

### Cool heads lead to steady hands

- **BrainSAVER** uses temperature regulating & cooling mechanism by Outlast® designed for NASA space missions.
- Long wear causes heat accumulation and overheating, which results in sweat production, Outlast® technology keeps the head cool & prevent blisters. Outlast® reduces sweat by 30% with its coated inner material and mesh leading to a high heat storage capacity in combination with maximum breathability. This results in lower heat during procedures by balancing out an individual's microclimate to provide a feel-good temperature and deliver excellent hygiene.



## BRAIN SECTIONS



The results of a research study indicate that Interventional cardiologists receive “very high” radiation exposure levels to the left side of the head, specifically, when performing fluoroscopically guided invasive cardiovascular (CV) procedures.

According to the study Interventionalists received 16 times the ambient radiation level to the left side of the head during an invasive CV procedure. Radiation exposure on the left side of the head was 4.7 times higher than exposure on the right side of the head. Interventional cardiologists typically stand anteriorly to the patient, with the left side of their body closest to the patient's chest and most proximate to the radiation source.

**BrainSAVER is the only product in the market that protects the entire brain with a built-in cooling technology.**

<b>TYPE</b>	<b>BrainSAVER attenuation</b>
<b>Min</b>	>73%
<b>Low*</b>	>82%
<b>Medium</b>	>91%
<b>High</b>	>95%

*It is advised to replace this device atleast once a week.*

*\*Recommended*

# UniRay

**UniRay Medical LLP**  
Mumbai, India  
**E:** sales@uniraymedical.com  
**W:** www.uniraymedical.com

**CE**  
0598

